

NEWSLETTER
April 2026



CAPTURE THE ERYMANTHIAN BOAR

For the fourth labour, Hercules was sent to capture the Erymanthian Boar, a huge and dangerous creature that lived on Mount Erymanthus.

He chased the beast through snow-covered terrain,
eventually capturing it alive.

When he brought it back, King Eurystheus was so frightened
he hid in a large bronze jar.

u3a Chairman's Report April 2026

Hello to you all again. April is upon us with Easter coming soon. My daughter and family are coming this weekend before Easter. It will be nice as I haven't seen them since Christmas. This is what happens when you live a long way apart. Apparently, my nearly five-year-old grandson has decided to become vegetarian: yes, things happen earlier all the time. So, I have to reread my vegetarian recipe book for inspiration. The twins also like individual food separated, so casseroles, stews and the like are out. Perhaps a deconstructed meal, the type that's all the rage! It will get my little grey cells working whatever I decide. As my children are all doing their own thing this Easter, I am going to my sister's house near Bedford, along with my brother. She announced that we cannot go on Good Friday as she is busy and we must leave on the Monday afternoon. No flexibility there then! As I have to be back for u3a on the Tuesday after Easter, it is quite convenient to get away. I just hope that the roads are not too bad as it is a Bank Holiday Monday! If I stagger in bleary eyed on the Tuesday, you will know why.

I went to the market in Hythe today. The vegetable stall is back! I bought the local watercress which I love. The watercress from Alresford is so much more flavourful than the packeted stuff you get in supermarkets. I then chatted to the pork man but decided not to buy anything following the vegetarian news from my daughter. I also went to the plant stall where I bought three bushes for my daughter for her birthday. I was chatting to the garden man who has been very helpful in the past. However, today he was trying to convince me that berries come before flowers (which they don't) on a pyracantha. I think he was having a senior moment. After looking at my puzzled face, he eventually conceded that he was wrong.

You may have seen that the Marsh in Hythe and other roads are blocked off for road works. I chatted to one of the workmen, (you may have noticed a trend here of me chatting to men). He said they were doing the kerbstones and the edges of the roads first, then filling in potholes and then either side of Easter they were actually resurfacing the whole road. Wonders will never cease!

I hope you have all received your booklet about 'Changes to parking in the heart of the New Forest'. We will have to pay to park from April. I am not happy about this. There does not appear to be any discount for local people. You can pay for a whole year at a cost of £96 per year and you can park in all Forestry England car parks. I am not quite sure how this will be managed as I have seen hessian covered notices but no cameras. There are also a lot of grass verges that people will use. I have seen more deep ditches being dug and some short wooden poles to prevent access. I am still not convinced it will be monitorable. Someone said they would be using more rangers to check vehicles – what in all 129 car parks!?

Anyway, I hope you all have a lovely Easter whatever you decide to do. I will see you all at the meeting on 7th April.

Marilyn.

Caring for the New Forest - changes to parking

Forestry England say

"As an organisation, we currently receive less than 20% of our core funding from the government with the rest having to be found from our own activities including things like timber sales and car parking charges. Currently planned to start in late April 2026, parking charges will be introduced at all of our car parks in the New Forest to help us care for this special place."

Quiz

Some Roman and Greek gods for you to find.

A P O L L O T U L P O R T I A N E H T A
P F L O R A B U R O O J C T U D M A S U
H A E W O A R O F M Q S B G N N D P S R
R U H S X O S E N O I N E P T U N E U O
O N J C U P I D K N R M L I L R B L H R
D U M K E Y A J D A N I L T D O E H C A
I S L R G J Z F S E I N O E C O N O C D
T P I D C U Q B E R M A N S E Z N M A D
E N T A Y P U A D T X E A V R N W O B I
A W N T E I X V A R O H T Y E I V N Z A
A N J A I T S E H E P H A E S T U S B N
C A E U D E U S E E T C J E R F L E D A
G P S N N R L H R I R O Y J E R C O S T
A N U T R O F K M Q V A Z B L P A O O S
V M R H K R I S E E N E A N E A N N I E
R O N I L O P U S Q C K R R M L R S J V
E Y I S U S Y N O I D U A I I U E V H E
N W R A G E X A F F A U R A T M Y A E N
I A U Z B M O J I D W H E A T A E E S F
M E R C U R Y B V E N U S N Y A S U E Z

Aphrodite

Apollo

Ares

Athena

Aurora

Bacchus

Bellona

Ceres

Cupid

Cybele

Demeter

Diana

Dionysus

Faunus

Flora

Fortuna

Hades

Hephaestus

Hera

Hermes

Hestia

Janus

Jove

Juno

Jupiter

Mars

Mercury

Minerva

Neptune

Pluto

Pomona

Poseidon

ProsPerpina

Saturn

Venus

Veritas

Vesta

Vulcan

Zeus

What a Day 3 - 1st April

1st April – All Fools Day – a day for jolly pranks and whose origin is unknown.

In 1698 several people were tricked into going to the Tower of London to watch the lions being washed.

There'll be none of that nonsense here!

1204 - Eleanor of Aquitaine died.

1578 - William Harvey born – died 1657.

The first physician to describe in detail the circulation of the blood and the pulmonary system.

1854 - Charles Dickens's (local lad made good if you come from Portsmouth) *Hard Times* began as a serial in the magazine *Household Words*. He was a well established writer by that time.

1867 - Singapore became a British Crown colony.

1873 - SS *Atlantic* sank off Nova Scotia with the loss of 547 lives.

Previously in 1854 RMS *Tayleur* sank and in 1912 *Titanic* sank. They were all White Star Line vessels and the latter two were on their maiden voyages.

Probably best to be wary of booking a first voyage in those days!

1885 - Clementine Churchill born.

1918 - Royal Flying Corps and Royal Naval Air Service joined to form the Royal Air Force.

I'm standing to attention as I write this.

1938 - Long thought to be extinct a small number of

Pastarius macaronii trees were discovered in northern Italy.

1960 - Hawker Harrier entered RAF service.

1961 - No need to consult the young 'uns on this – Susan Boyle was born.

1976 - Apple Computer company came into being.

1998 - King Combs was born – no I didn't know either but apparently he's an American rapper.

Oh well! Gotta keep up with the kids!

Peter Dudley

u3a Highgrove visit on Monday 27th July 2026
Out visit to Highgrove Gardens
owned by King Charles III
is on 27th July.

Cost £138

Includes coach, 1.5 hour guided tour of gardens,
two course lunch with wine and coffee.
We will be collecting names on Tuesday 7th April at 13:15
and require full payment on the day.
It will be on a first come first served basis.
There are 26 spaces. We will have a reserve list.

We do hope you can join us. It should be a great day out.
We will be leaving at 9:00a.m., to be confirmed.
The coach is a midi coach with a toilet on board.
We will stop on the way for a coffee break.
We shall arrive at 12noon. You will need photo I.D. like a passport
or driving licence for security reasons.
The tour starts at 12:30 for one and a half hours
so you will need to be able to walk for that long
and wear sensible footwear.
This will be followed by lunch at 14:20.
We will then have time to look in the retail outlets.
If you have any questions, please ask myself or Eunice.

Marilyn Wheelband and Eunice Adams.



HIGHGROVE

New Forest/Waterside u3a Garden Group

For their March meeting, a small contingent from the Garden Group enjoyed a perfect Spring day at the Sir Harold Hillier Garden near Romsey.

The sun shone in a brilliant blue sky so that everything sparkled. In the Winter garden, work was underway pruning and clearing the ground amongst the last of the daffodils and hellebores. Elsewhere, the camellias were in full flower but the stars of the show were the magnolias which were at their best particularly when viewed against the cloudless blue sky. It was warm enough to sit outside for lunch at the garden restaurant.

We are indeed fortunate to have such a wonderful local garden to admire and learn from. A walk around this world-renowned garden and arboretum is guaranteed to lift one's spirits!

Future meetings ,on the third Thursday of the month, are planned to Exbury Garden, McPennys Nursery and Woodland Garden in Bransgore, King John's House Garden, Romsey and Garden Group member's gardens.

For information on the Garden Group, please contact the Garden Group leader *Liz Coppack* (07485 072634).





u3a Garden
Group at
Hilliers



u3a Garden Group
at Hilliers



Hurn Court Opera

If it's not already on your radar, I wanted to bring your attention to Hurn Court Opera's brand new production of Verdi's *La Traviata*, which opens at theatres across Dorset and Hampshire this spring.

Hurn Court Opera is a registered arts charity, with a simple mission: to shine a spotlight on outstanding young singers at the beginning of their careers, and give them opportunities to perform to audiences.

Our short spring tour visits the following regional theatres, and may be of interest to your u3a members:

The Regent, Christchurch - 16 April at 7pm

Coade Theatre, Bryanston - 18 April at 4pm (Please note the slightly earlier, matinee performance at this venue, where we also have plenty of accessible parking!)

Theatre Royal, Winchester - 20 April at 7pm

Our production of *La Traviata* is faithful to the original storyline (which is based on the novel '*La Dame aux Camélias*' by Alexandre Dumas) but receives a small twist, being set in 1930's Paris.

Each of the stunning Art Deco costumes for the production has been made by students on the BA (Hons) Degree in Costume at Arts University Bournemouth - a collaboration which sees talented young people behind the stage supporting talented young performers on stage.

It is a fully staged production, sung in Italian with English surtitles and live music performed by the Hurn Court Opera orchestra.

If you would like any more information please don't hesitate to let me know. We are able to arrange for group bookings should this be of interest - just let me know and I will put you in touch with the right person to assist you.

You can discover more about Hurn Court Opera and our work here www.hurncourtopera.org

Susie Carver

Ballroom and Sequence Dancing

If you are interested in Ballroom and Sequence Dancing do come and join us at:

Marchwood Village Hall

Next dances are:

Saturday, 11/April, 25/April, 16/May.

14:00 - 16:00 £5 per person, including refreshments.

Hythe and Dibden Parish Hall

Next dances are:

Wednesday 1/April and then every Wednesday.

14:00 - 16:00

We are a friendly group of people of all abilities and you will be made most welcome.

For more information please contact me on 023 8089 1259

Sylvia Strand.



Winchester Cathedral

We went to Winchester Cathedral for the Helios exhibition. There are 400,000 photos arranged in a spherical sculpture, accompanied by music that interprets or resembles the sound of the sun and NASA recordings.

Afterward, we discovered a very interesting section called "Kings and Scribes," as well as the Morley Library, where you can read ancient texts in Latin thanks to the technology available, similar to the National Gallery in London.

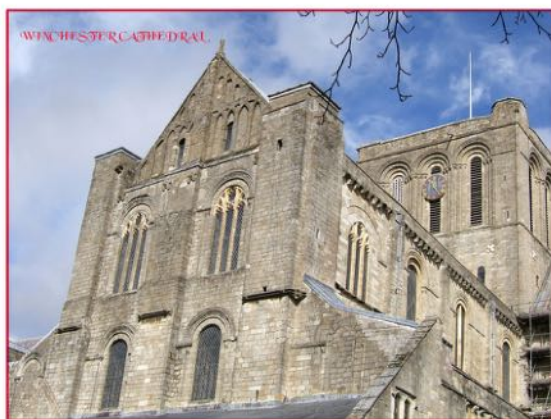
There is a small video on how to bind books and also the Winchester Bible made of four different volumes.

There is also another area of memorabilia of objects found such as a Roman altar, beams, books, etc really interesting.

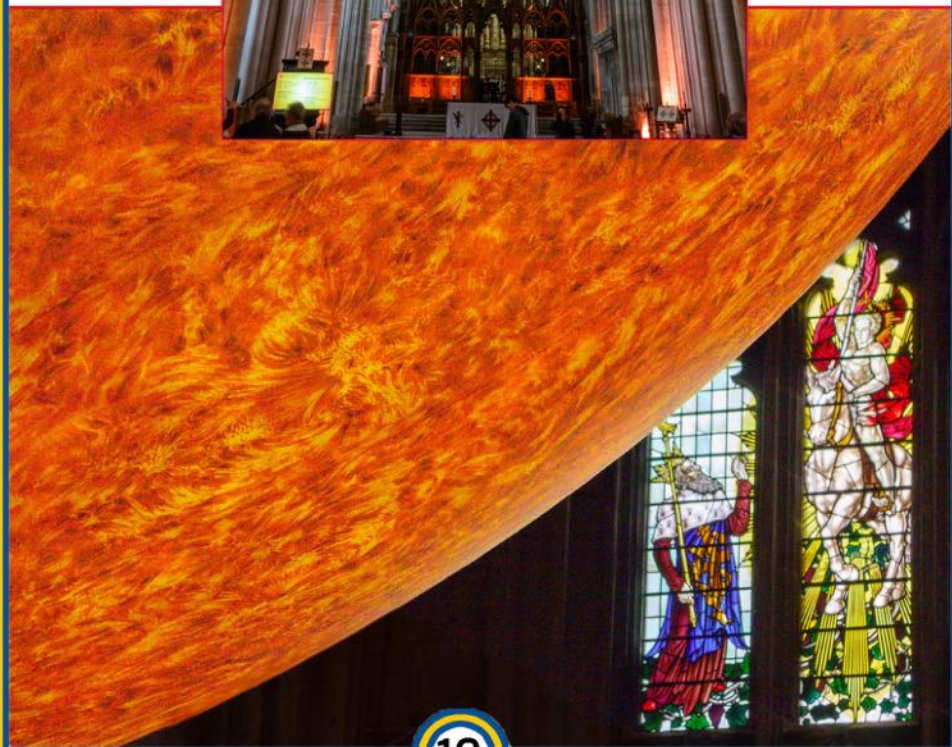
This area has only four or five years after Covid, consisting of a Mezzanine and a Triforium, has 45 steps but they have a lift, in case you do not fancy climbing them.

The whole History of Kings and Winchester Cathedral also is quite fascinating.

Monse Snellgrove



H
e
l
i
o
s



Overview of Contactless Limit Changes

As of March 19, 2026, the mandatory £100 limit on contactless card payments in the UK has been removed. This change allows banks and payment providers to set their own limits or even eliminate them entirely.

Key Features of the New Rules

Flexibility for Banks

- Banks can now determine their own contactless payment limits.
- Customers may have the option to set their own limits or disable contactless payments altogether.

Consumer Protections

- Existing protections against unauthorized transactions remain in place.
- Consumers will be reimbursed for fraud cases, such as lost or stolen cards.

Current Status and Expectations

Immediate Changes

- Most banks are expected to maintain the £100 limit initially.
- Changes will not be uniform; each bank will decide when to implement new limits.

Future Implications

- The flexibility aims to enhance consumer convenience and adapt to changing spending habits.
- The FCA encourages banks to improve fraud prevention measures as they adjust limits.

Conclusion

The removal of the £100 contactless limit is designed to streamline payments and meet consumer demands, while still ensuring robust fraud protections are in place.

to see the Which report go to

<https://www.which.co.uk/news/article/contactless-100-cap-ending-how-to-protect-yourself-from-fraud-aziUi3d0QZTq>

On the 17th March we had a talk from the 'Patient Champions'. These are a group of volunteers who support the local GP practices in the Waterside, namely:

The Red & Green Practice (Hythe & Blackfield)
Waterfront & Solent surgery
Forestside (Dibden Purlieu & Marchwood)

They have a number of initiatives to help support patients through community activities.

They run a free drop in coffee morning at S. John's Hall in Hythe from 11:30 am to 1:30 pm on the last Thursday of the month. There is no need for a referral or to make an appointment - just drop in.

There is also their walking group who meet on the first Friday of the month at 12pm. They have been meeting at Dibden Inclosure but due to the new car parking charges this will probably change.

A book group also meet at St. John's hall in Marchwood, and an IT support group (mainly for the NHS app).

For details of all their services please go to their website

<https://www.wpcnpatientchampions.co.uk/>



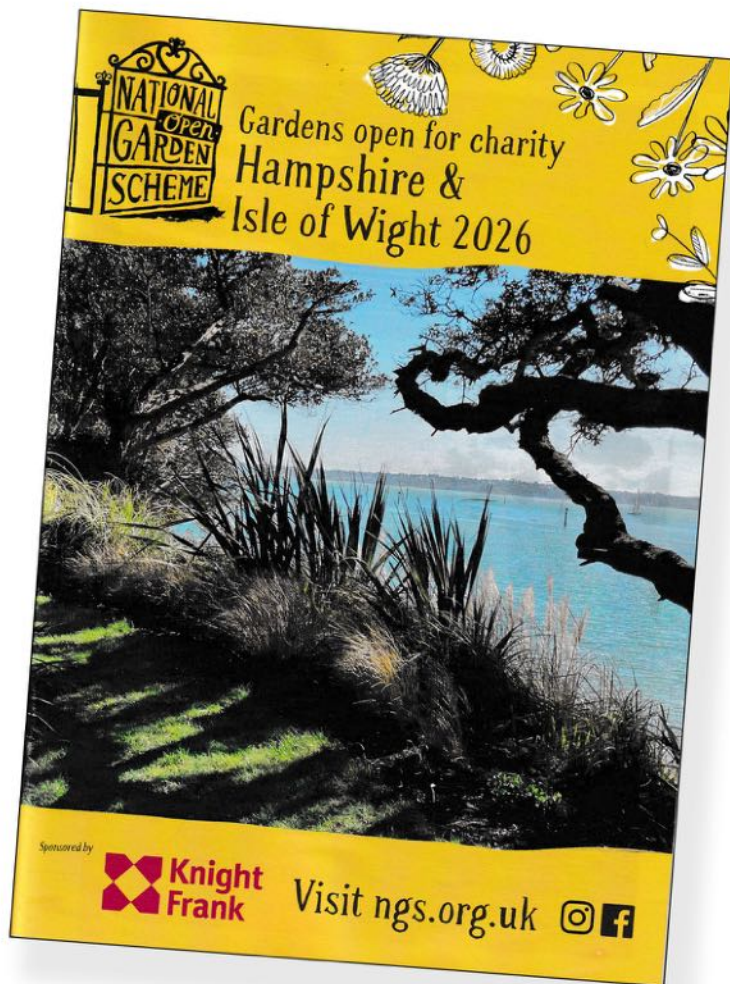
The Waterside Health & Wellbeing Team can also offer Health Coaching, Lifestyle Support, Long-Term Condition Management, Emotional Wellbeing Support and Community Links. Although they accept referrals from clinicians you can also self-refer via their website or telephone.

<https://www.healthandwellbeingwpcn.co.uk/>
telephone 07392 719513



It's that time of year again ...

The National Garden Scheme has opened the doors to lots of different gardens in the area. Pick up your copy of their booklet to find plenty of places to go - admire the gardens and have a cup of tea.



London Trip – 30th April 2026

We now have pick up-times for the trip.
It's an early start I'm afraid as we have quite a few pick-up points.

Mill Pond	7:20 a.m.
Teachers	7:22 a.m.
Rollestone Road	7:24 a.m.
Fawley Square	7:30 a.m.
Pentagon	7:32 a.m.
Blackfield Bus Stop	7:34 a.m.
Lime Kiln Lane	7:38 a.m.
Butts Ash	7:42 a.m.
St Andrews	7:46 a.m.
Mullins Lane	7:47 a.m.
Croft	7:48 a.m.
Langdown	7:50 a.m.
Shell Garage	7:55 a.m.
Cabot Drive	7:58 a.m.
Marchwood Church	8:05 a.m.
Rushington	8:10 a.m.
Any Time Fitness	8:15 a.m.

We will be stopping at Fleet Services for 30-45 mins for a comfort stop.

Our ticket entry time to the gallery is 12:30 pm & 12:45 p.m.

The Coach will pick us up 4pm to take us home.

Any queries please contact me. 023 8086 3816

Margaret Andrews

Southampton Art Gallery

As you may know, Southampton Art Gallery has been closed for a year and re-opened on March 7th after a successful refurbishment programme.

The Art Gallery is located in the Grade II listed Civic Centre and houses a nationally important art collection, often described as one of the best outside London. The collection comprises of over 5,000 artworks spanning eight centuries of European art from the Renaissance to the present day. The core, however, is British 20th century and Contemporary art.

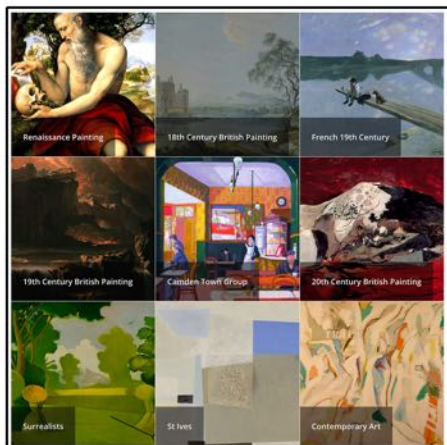
To coincide with the Gallery re-opening, there is a major solo exhibition of new work by local artist Emma Richardson.

There is also a superb collection of black and white photographs taken during the refurbishment before you go up to the gallery.

It is easily accessible from the Waterside, with the number 9 bus stopping at Sea City Museum just a few minutes walk away, and outside the BBC building for the return trip. The Sea City Museum also has a small cafe (free to enter) where you can have a cup of tea and slice of cake.

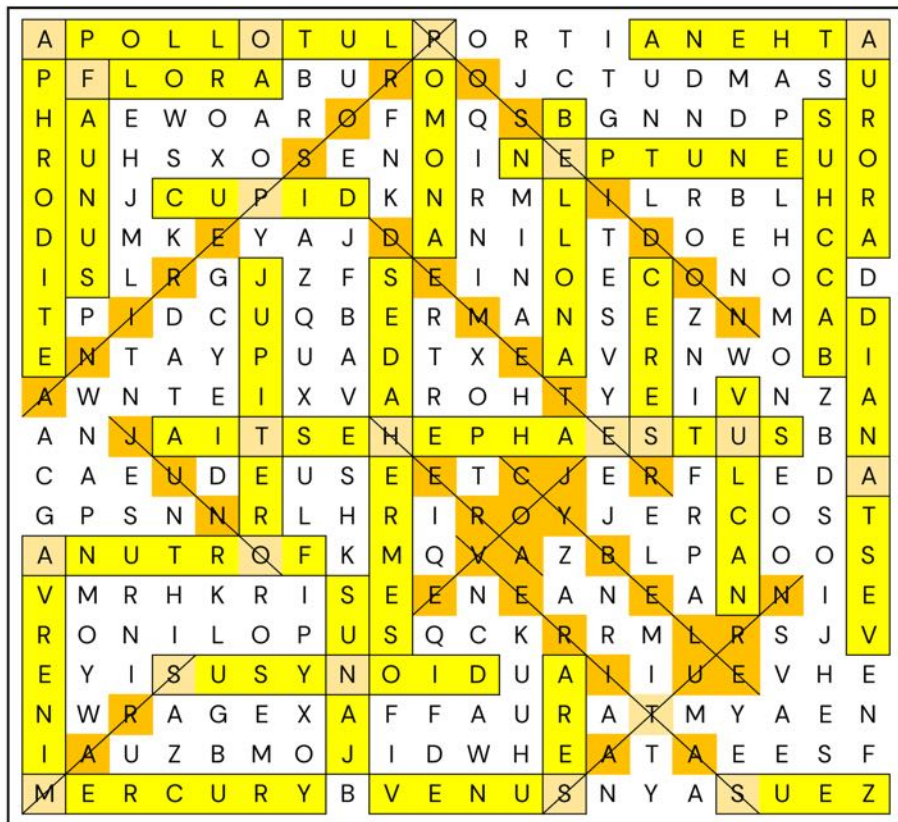
Well worth a visit.

Rob Snellgrove



Quiz

and here they all are



Hopefully solved without divine intervention!

COMING SOON

MEETINGS:



◇ Our forthcoming talks
at St. Andrew's

- ◇ Tuesday : 7th April - at 2pm.
Subject : "A Beginning, A Muddle and An End"
Speaker : Bobbie Darbyshire

- ◇ Tuesday : 21st April - at 2pm.
Subject : "Life - and other problems"
30 odd years in the media
Speaker : Judy Theobald

- ◇ Tuesday : 5th May - at 2pm.
Subject : "Trek Africa"
Speaker : Fran Sandham

- ◇ Tuesday : 19th May - at 2pm.
Subject : "Mrs Martins Library"
Speaker : Jane Glennie



u3a.nfwnl@gmail.com

<https://u3a-newforest.org.uk>

Registered Charity Number: 1030719

